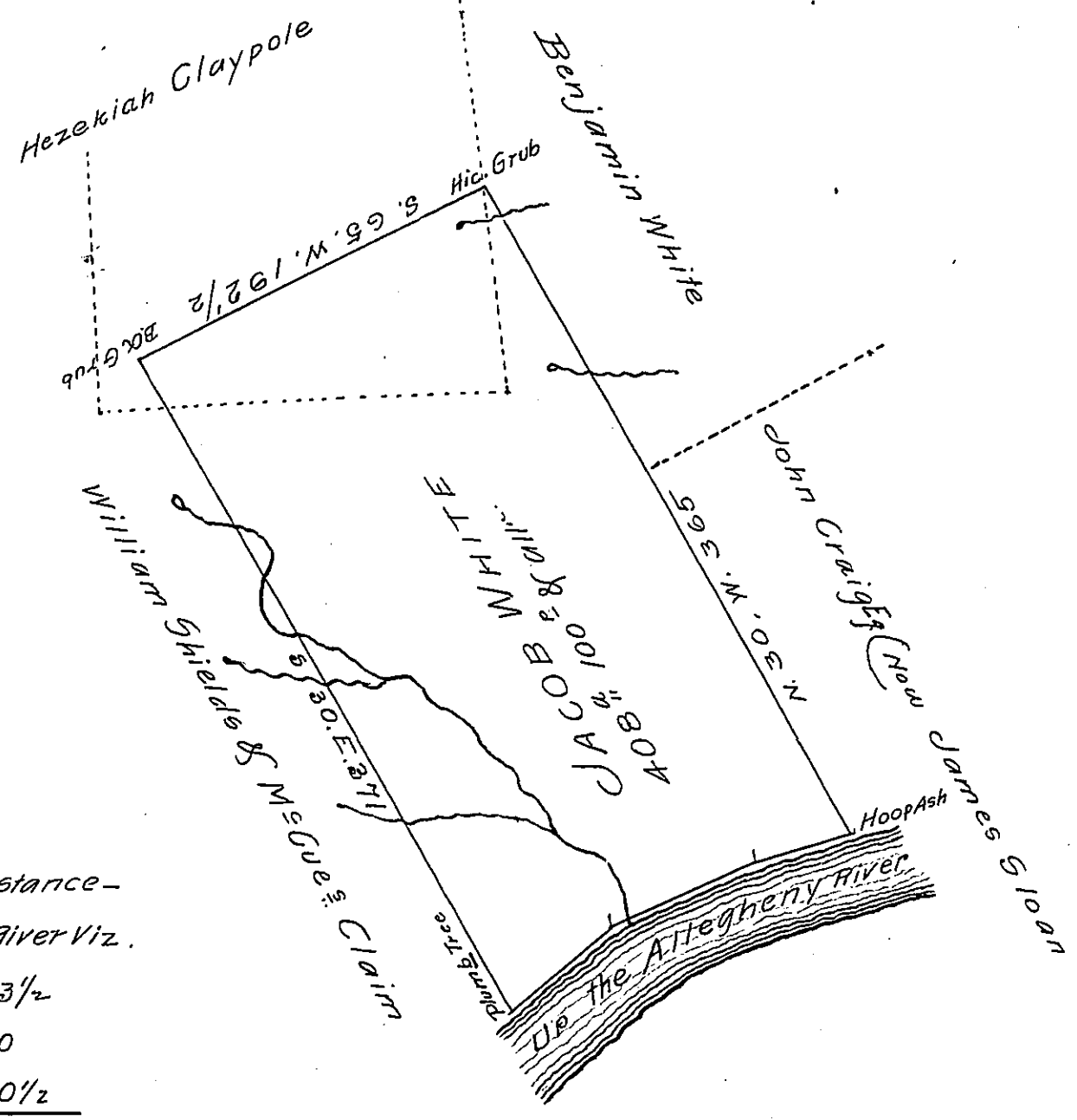


FORM NO. 1.



Courses and distance—  
 Up the Allegheny River viz.  
 N 53 E 63 1/2  
 N 65 E 80  
 N 73 1/2 E 50 1/2  
 Total 184

In pursuance of a Warrant dated December 31<sup>st</sup> 1816 Surveyed to Jacob White on the 21<sup>st</sup> day of April 1817 the above described tract of land containing Four hundred and Eight acres & One hundred perches with an allowance of six per Cent &c. Situate N.W. of and adjoining the Allegheny river and lands of John Craig Esq. Crow James Sloan Hezekiah Claypole & others. Buffalo Township Armstrong County  
 Robert Orr Jun<sup>r</sup> D.S.

N.B. The dotted lines represents an interference with a survey made to A. McCall & H. Claypole on Richard T. Leech Esq. S.G. Warr<sup>t</sup> dated Sept<sup>r</sup> 10<sup>th</sup> 1805  
 F. Orr Jun<sup>r</sup> D.S.

IN TESTIMONY that the above is a copy of the original remaining on file in the Department of Internal Affairs of Pennsylvania, made conformably to an Act of Assembly approved the 16th day of February 1833, I have hereunto set my hand and caused the Seal of said Department to be affixed at Harrisburg, this twenty-sixth day of June 1907

*Henry Howell*  
 Secretary of Internal Affairs.